

TECHNICAL DATA

PRESENTATION :

	Test Methods	Metric
Roll length		19,55 m
Roll width		1,025 m
Selvage width		± 25 mm (lap 80mm)
Coverage		19 m ²
Thickness	ASTM D1000	1800 µm / 1,80 mm
Roll weight (per m ²)		± 1,7 kg/m ²
Warranty		10 year product warranty
Unithene DB530 must be laid in strict accordance with the manufacturers code of good waterproofing practice		

PHYSICAL PROPERTIES :

	Test Methods	Metrics
Membrane strength	ASTM D1000	25,0 N/mm
Elongation	ASTMD1000	50%
Puncture resistance	ASTM E 154	900N
Adhesion – 180° peel	ASTM D1000	4,0 N/mm
Water vapour transmission	ASTM E 96	0,50 g/m ² /24hour
Dimensional stability - longitudinal	MOAT 27/M 5.1.6 (80°C)	Nil
Temperature range – application		10°C to 35°C
Temperature range – service		5°C to 65°C
Recommended primer		Primer D
Colour		Dark Grey / Black

Overview

Unithene DB530 is a durable bitumen polymer modified self-adhesive membrane which has a unique woven polypropylene sheet of 0,45mm thickness on one side which gives it a high resistance to damage, particularly from vehicular traffic. The surface material is also highly resistant to heat and therefore can have hot asphalt poured directly onto it when utilised as waterproofing to parking decks and bridges provided a geofabric bondbreaker is used.



Fields of Application

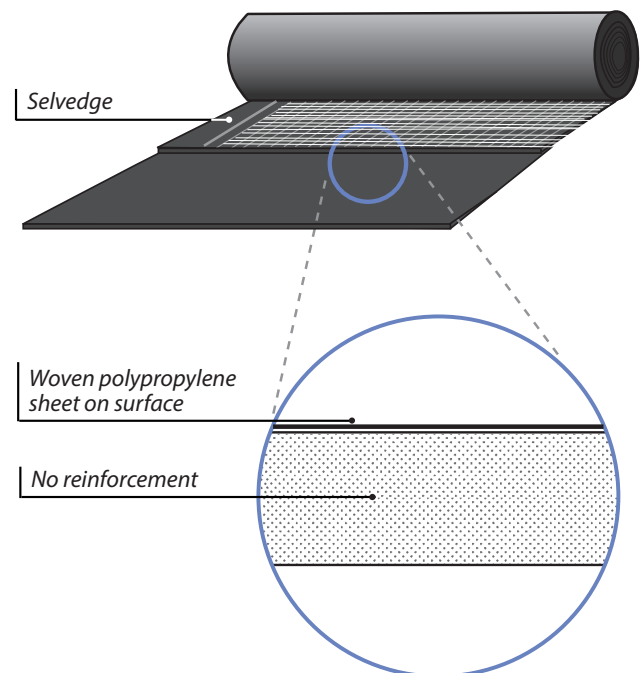
This self-adhesive membrane is recommended for the waterproofing of bridges and car park decks. It is suitable for both new construction and refurbishment projects, where the substrate is to be topped with hot premix asphalt (geofabric bond breaker required).

These attributes make **Unithene DB530** suitable for:

- Roof & plaza decks
- Car park decks
- Bridges
- Road counter fixings

Features

- The mesh is off-set during the manufacturing process, resulting in a selvage of pure polymer bitumen on one side of the sheets length.
- The overlap will amalgamate, by a process of cold fusion, with the underside of the adjacent overlapping sheet to form one consistent waterproofing layer.
- Self healing to minor damage.
- No heating and drying - instant waterproofing solution.
- Rapid sealing and bonding.



Specifications are subject to change without notification. Results shown are typical but reflect test procedures used. Actual field performance will depend on installation methods and site conditions.

INSTALLATION INSTRUCTIONS

Surface Preparation

- The substrate is to be clean, dry and free of any dust, grease, oils and loose debris. It is to be of smooth and even condition and free of protrusions and voids.
- Screed to falls of 1:80.
- We recommend the use of flanged **WPC side outlets** and/or **WPC roof drains**.
- Prime all surfaces with **WPC Primer D**.

Considerations for Application

* Please consult with your nearest WPC branch to confirm the specification and obtain recommendations regarding complementary waterproofing products.

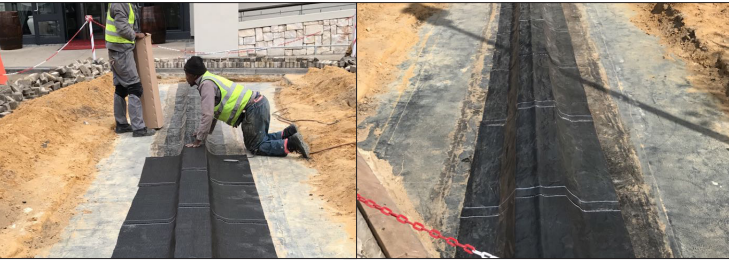
As each project is unique, consideration needs to be given to the following aspects:

- Threshold heights
- Counterflashing
- Flanged outlets

NOTE: Product is not designed for permanent UV exposure. Cover immediately or within a week or two after installing .

Storage and Safety

- **Unithene DB530** is to be transported and stored vertically, and evenly spaced over the roof to distribute the weight (avoiding excess loads in one area).
- The substrate/floor must be regular and free of sharp objects.
- Refer to full MSDS for additional information.



Disclaimer: The use of this product is beyond the manufacturer's control and liability is restricted to the replacement of material proven faulty. The manufacturer is not responsible for any loss or damage arising from incorrect usage. Specifications are subject to change without prior notice.

www.waterproofingcentre.co.za

www.derbigum.co.za

Western Cape

**Cape Town
Somerset West
George**

021 448 7880
021 854 4760
044 874 3905

KZN

Durban

031 569 1843

"Watertight Solutions"

Gauteng

**Linbro
Pretoria
Alrode***

011 608 0317
012 803 1552
011 868 1028

Mpumalanga

Nelspruit

013 752 4409

Email Us: assist@waterproofingcentre.co.za
assist@derbigum.co.za

Eastern Cape

**Port Elizabeth
East London**

041 365 2936
043 722 5676

Hotline: 0861 WPC 000 / 0861 972 000

*manufacturing & export

Revision 2018-07-01